

## NATIONAL PIG SLAUGHTER MONITOR

### PREPARED BY NEW ZEALAND PORK

**PIG KILL FULL WEEK ENDING<sup>1</sup>: 11/12/2011**
**Week 10**
**WEEKLY KILL COMPARISON**

		NUMBER OF CARCASSES	WEIGHT (KG)	AVG. WEIGHT (KG)	WHOLE CARCASSES CONDEMNED	TOTAL KILL <sup>2</sup>	LAST WK	CHANGE	CUMULATIVE YEAR TO DATE <sup>3</sup>	CUMULATIVE YEAR TO DATE LAST YEAR
PIGS < 50 KG	NTH IS	418	17,024	40.73	2	420	367	0.14	3,461	5,041
	STH IS	488	19,740	40.45	2	490	460	0.07	3,592	4,186
	<b>NZ</b>	<b>906</b>	<b>36,764</b>	<b>40.58</b>	<b>4</b>	<b>910</b>	<b>827</b>	<b>0.10</b>	<b>7,053</b>	<b>9,227</b>
PIGS 50-65KG	NTH IS	3,187	188,792	59.24	2	3,189	2,940	0.08	26,110	25,625
	STH IS	3,269	196,330	60.06	2	3,271	2,990	0.09	24,255	24,907
	<b>NZ</b>	<b>6,456</b>	<b>385,122</b>	<b>59.65</b>	<b>4</b>	<b>6,460</b>	<b>5,930</b>	<b>0.09</b>	<b>50,365</b>	<b>50,532</b>
PIGS 65-75 KG	NTH IS	1,627	112,421	69.10	1	1,628	1,923	-0.15	18,751	18,925
	STH IS	3,721	258,871	69.57	9	3,730	3,774	-0.01	36,859	38,064
	<b>NZ</b>	<b>5,348</b>	<b>371,292</b>	<b>69.43</b>	<b>10</b>	<b>5,358</b>	<b>5,697</b>	<b>-0.06</b>	<b>55,610</b>	<b>56,989</b>
PIGS >75 KG	NTH IS	420	33,859	80.62	0	420	556	-0.24	7,131	4,821
	STH IS	1,747	144,264	82.58	1	1,748	1,748	0.00	18,393	18,944
	<b>NZ</b>	<b>2,167</b>	<b>178,123</b>	<b>82.20</b>	<b>1</b>	<b>2,168</b>	<b>2,304</b>	<b>-0.06</b>	<b>25,524</b>	<b>23,765</b>
TOTAL PRIME PIGS	NTH IS	5,652	352,096	62.30	5	5,657	5,786	-0.02	55,453	54,412
	STH IS	9,225	619,205	67.12	14	9,239	8,972	0.03	83,099	86,101
	<b>NZ</b>	<b>14,877</b>	<b>971,301</b>	<b>65.29</b>	<b>19</b>	<b>14,896</b>	<b>14,758</b>	<b>0.01</b>	<b>138,552</b>	<b>140,513</b>
CHOPPERS	NTH IS	106	16,614	156.74	0	106	109	-0.03	940	843
	STH IS	288	37,270	129.41	0	288	243	0.19	2,844	2,211
	<b>NZ</b>	<b>394</b>	<b>53,884</b>	<b>136.76</b>	<b>0</b>	<b>394</b>	<b>352</b>	<b>0.12</b>	<b>3,784</b>	<b>3,054</b>
<b>TOTAL</b>	<b>NZ</b>	<b>15,271</b>	<b>1,025,185</b>	<b>67.13</b>	<b>19</b>	<b>15,290</b>	<b>15,110</b>	<b>0.01</b>	<b>142,336</b>	<b>143,567</b>

1 Information gathered weekly from all abattoirs licensed to kill pigs.

2 Includes carcasses (after removal of condemned parts) inspected and passed for human consumption, and whole carcasses condemned up to and at scales

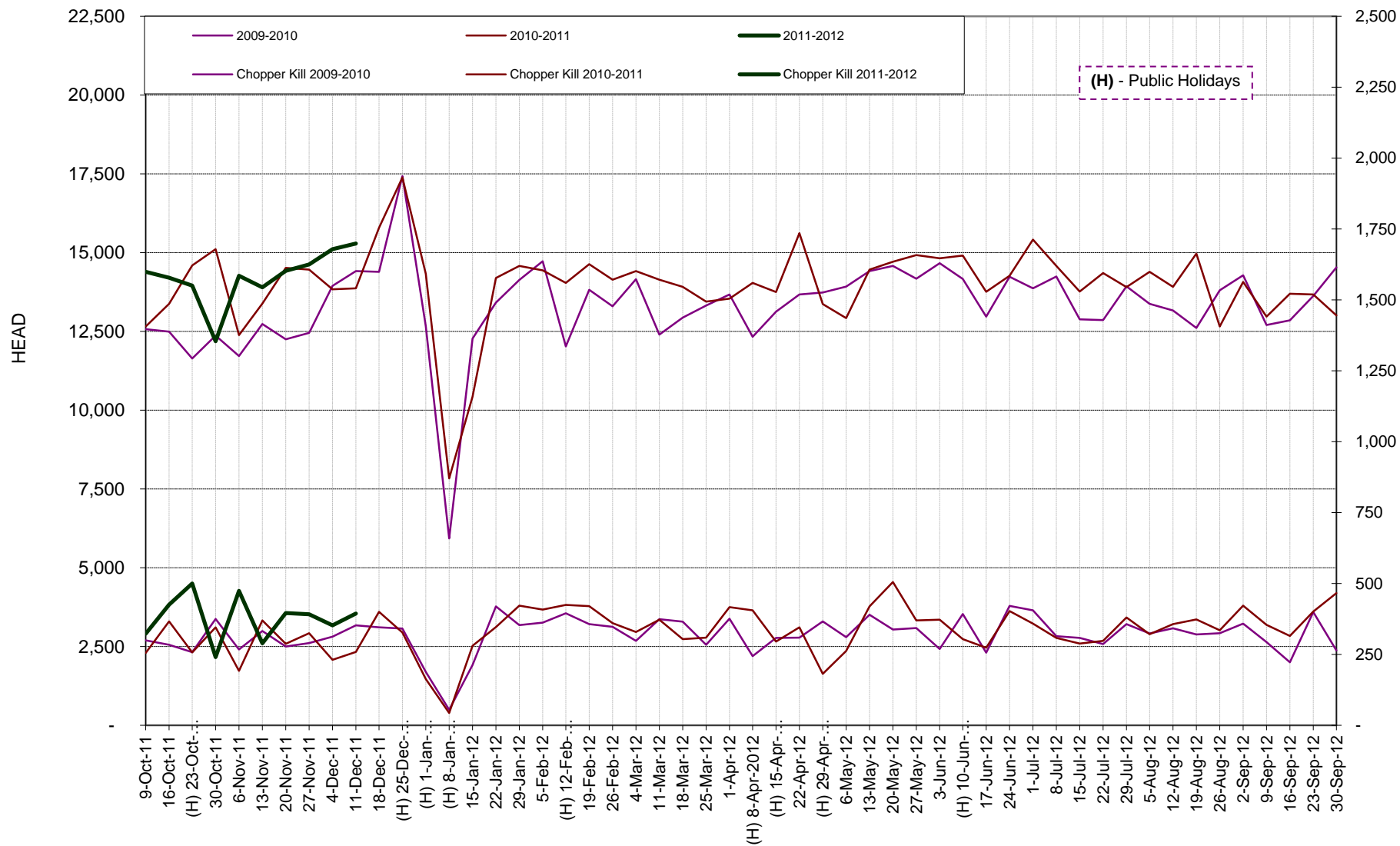
3 Meat Year (1 October – 30 September) week to date

Contact: Grant Boston, New Zealand Pork Ph 04 917 4750 Fax 04 385 8522 email: grant.boston@pork.co.nz

### Pork Production WEEK 10 11-12

*DISCLAIMER: This information (including any attachments) is confidential. NZPork is not responsible for any changes made to this message and/or any attachments after sending by NZPork. All due care has been taken in preparing this information, however New Zealand Pork does not guarantee its accuracy. To the extent possible New Zealand Pork's liability is excluded, and persons acting in reliance on the information do so at their own risk.*

### TREND IN THE WEEKLY PIG KILL



#### Pork Production WEEK 10 11-12

*DISCLAIMER: This information (including any attachments) is confidential. NZPork is not responsible for any changes made to this message and/or any attachments after sending by NZPork. All due care has been taken in preparing this information, however New Zealand Pork does not guarantee its accuracy. To the extent possible New Zealand Pork's liability is excluded, and persons acting in reliance on the information do so at their own risk.*