

NATIONAL PIG SLAUGHTER MONITOR

PREPARED BY NEW ZEALAND PORK

PIG KILL FULL WEEK ENDING¹:

20/6/2010

Week 38

WEEKLY KILL COMPARISON

		NUMBER OF CARCASSES	WEIGHT (KG)	AVG. WEIGHT (KG)	WHOLE CARCASSES CONDEMNED	TOTAL KILL ²	LAST WK	CHANGE	CUMULATIVE WEEK TO DATE ³	CUMULATIVE WEEK TO DATE LAST YEAR
PIGS < 50 KG	NTH IS	623	26,243	42.12	3	626	376	0.66	21,051	22,567
	STH IS	386	15,870	41.11	3	389	351	0.11	16,127	16,622
	NZ	1,009	42,113	41.74	6	1,015	727	0.40	37,178	39,189
PIGS 50-65KG	NTH IS	2,508	146,899	58.57	3	2,511	2,080	0.21	91,716	90,872
	STH IS	1,687	99,270	58.84	2	1,689	1,796	-0.06	76,017	74,940
	NZ	4,195	246,169	58.68	5	4,200	3,876	0.08	167,733	165,812
PIGS 65-75 KG	NTH IS	1,848	128,407	69.48	1	1,849	1,637	0.13	62,192	67,035
	STH IS	4,099	288,458	70.37	7	4,106	4,020	0.02	137,986	127,210
	NZ	5,947	416,865	70.10	8	5,955	5,657	0.05	200,178	194,245
PIGS >75 KG	NTH IS	540	43,999	81.48	2	542	490	0.11	14,426	23,847
	STH IS	2,103	171,763	81.67	0	2,103	1,965	0.07	63,596	64,810
	NZ	2,643	215,762	81.64	2	2,645	2,455	0.08	78,022	88,657
TOTAL PRIME PIGS	NTH IS	5,519	345,548	62.61	9	5,528	4,583	0.21	189,385	204,321
	STH IS	8,275	575,360	69.53	12	8,287	8,132	0.02	293,726	283,582
	NZ	13,794	920,908	66.76	21	13,815	12,715	0.09	483,111	487,903
CHOPPERS	NTH IS	128	20,971	163.84	0	128	74	0.73	4,020	4,080
	STH IS	291	39,171	134.61	2	293	182	0.61	7,916	7,540
	NZ	419	60,142	143.54	2	421	256	0.64	11,936	11,620
TOTAL	NZ	14,213	981,050	69.02	23	14,236	12,971	0.10	495,047	499,523

1 Information gathered weekly from all abattoirs licensed to kill pigs.

2 Includes carcasses (after removal of condemned parts) inspected and passed for human consumption, and whole carcasses condemned up to and at scales

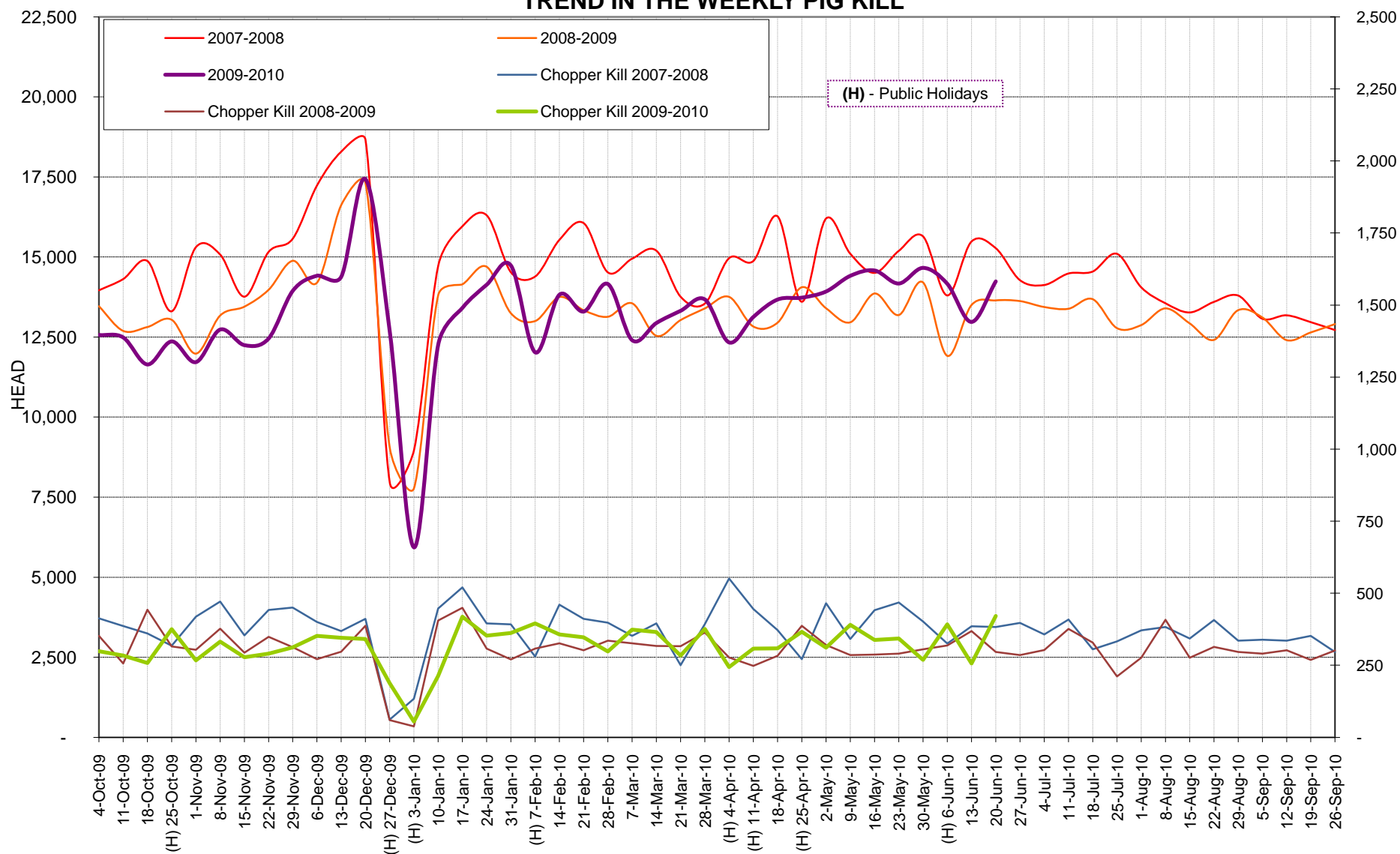
3 Meat Year (1 October – 30 September) week to date

Contact: Grant Boston, New Zealand Pork Ph 04 917 4750 Fax 04 385 8522 email: grant.boston@pork.co.nz

PIG KILL WEEK 38 09-10

DISCLAIMER: This information (including any attachments) is confidential. NZPork is not responsible for any changes made to this message and/or any attachments after sending by NZPork. All due care has been taken in preparing this information, however New Zealand Pork does not guarantee its accuracy. To the extent possible New Zealand Pork's liability is excluded, and persons acting in reliance on the information do so at their own risk.

TREND IN THE WEEKLY PIG KILL



PIG KILL WEEK 38 09-10

DISCLAIMER: This information (including any attachments) is confidential. NZPork is not responsible for any changes made to this message and/or any attachments after sending by NZPork. All due care has been taken in preparing this information, however New Zealand Pork does not guarantee its accuracy. To the extent possible New Zealand Pork's liability is excluded, and persons acting in reliance on the information do so at their own risk.